

THIS IS A SIMPLE GUIDE SHOWING SQA'S ANALYSIS CAPABILITES

WWW.AAMAADMISoftware.COM

359,464	0.3%
8,632,724	7.7%
59,087	0.1%
13,963,095	12.4%
5,266,055	4.7%
10,323,178	9.2%
5,283,470	4.7%
4,330,582	3.8%

Click on EOD Stocks to download the EOD data



0.1123	1.1601	-	1.16%	0.186
0.118	1.662	+	0.16%	11.600
1.121	0.1201	+	0.10%	N/A
20.232	1.0233	-	1.53%	10.201
0.186	1.1611	+	1.15%	13.203
1.1601	0.1602	-	0.87%	N/A
1.062	0.105	-	0.37%	20.160
0.1201	1.230	+	0.11%	N/A
1.0233	1.1577	+	1.12%	1.662
1	1.1011	+	3.23%	10.201
01	0.1602	+	2.16%	0.073
13	0.1002	+	1.16%	1.123
123	0.105	+	1.00%	N/A
	1.121	-	1.00%	20.232
	0.555	-	1.00%	0.283

13,963,095	12.4%
5,266,055	4.7%
10,323,178	9.2%
5,283,470	4.7%
4,330,582	3.8%

THIS IS THE MAIN SCREEN TO START WITH

Action Options Other Info

Ready

NSE to Metastock Ver. 4.1.3

Select Update Options

<input checked="" type="checkbox"/> NSE Equity	<input type="checkbox"/> BSE Equity
<input checked="" type="checkbox"/> NSE Futures	<input checked="" type="checkbox"/> BSE Indices
<input checked="" type="checkbox"/> NSE Indices	<input checked="" type="checkbox"/> Currency Futures
<input checked="" type="checkbox"/> Fil/DII Trade Figures	<input type="checkbox"/> World Indices
<input checked="" type="checkbox"/> NSEVolatility & Delivery	<input checked="" type="checkbox"/> MFs Nav

Save As Default

Update Selected
Exit



Ready

Set Parameters

Database Maint.

Adjust Splits

Click on 'Options'
to set the
Parameters for
EOD Data

Select Update Options

- | | |
|--|--|
| <input checked="" type="checkbox"/> NSE Equity | <input type="checkbox"/> BSE Equity |
| <input checked="" type="checkbox"/> NSE Futures | <input checked="" type="checkbox"/> BSE Indices |
| <input checked="" type="checkbox"/> NSE Indices | <input checked="" type="checkbox"/> Currency Futures |
| <input checked="" type="checkbox"/> Fil/DII Trade Figures | <input type="checkbox"/> World Indices |
| <input checked="" type="checkbox"/> NSEVolatility & Delivery | <input checked="" type="checkbox"/> MFs Nav |

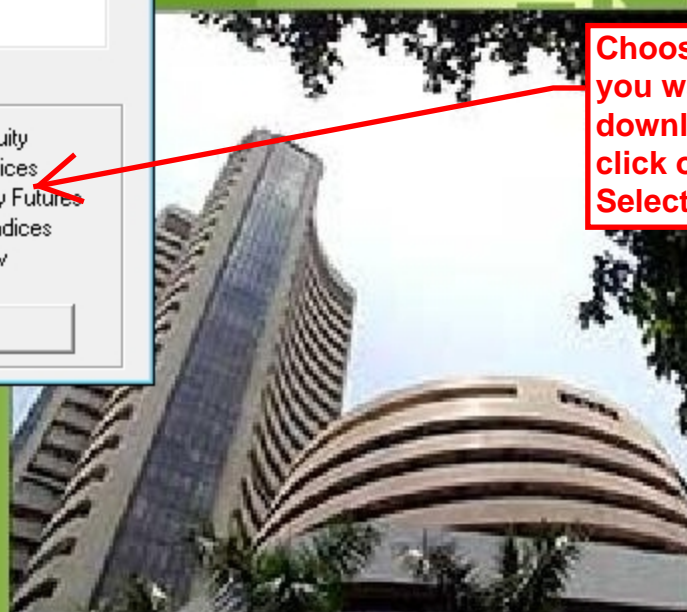
Save As Default

Update Selected

Exit

Choose the Data
you want to
download and
click on 'Update
Selected'

%.AAMAAADMISoftware.COM



1.1601	-	1.10%	0.186
1.662	+	0.16%	11.600
0.1201	+	0.10%	N/A
1.0233	-	1.53%	10.201
1.1611	+	1.15%	13.203
0.186	-	0.87%	N/A
1.1601	-	0.11%	20.160
1.662	+	0.11%	N/A
0.1201	+	1.12%	1.662
1.0233	+	3.23%	10.201
1.1611	-	2.08%	0.873
0.1602	+	2.16%	1.123
0.1602	+	1.16%	N/A
0.105	+	1.16%	N/A
0.105	+	1.16%	N/A
0.105	+	1.16%	N/A

0.3%

7.7%

0.1%

13,963,095

12.4%

5,266,055

4.7%

10,323,178

9.2%

5,283,470

4.7%

4,330,582

3.8%

IMPORTANT: SQA needs minimum 3months EOD data for analysis.

NSE to Metastock Ver. 4.1.3

Select Update Options

<input checked="" type="checkbox"/> NSE Equity	<input type="checkbox"/> BSE Equity
<input checked="" type="checkbox"/> NSE Futures	<input checked="" type="checkbox"/> BSE Indices
<input checked="" type="checkbox"/> NSE Indices	<input checked="" type="checkbox"/> Currency Futures
<input checked="" type="checkbox"/> Fil/DII Trade Figures	<input type="checkbox"/> World Indices
<input checked="" type="checkbox"/> NSEVolatility & Delivery	<input checked="" type="checkbox"/> MFs Nav

Save As Default

Update Selected Exit

Options

BSE Folder :- D:\BSESECURITIES\

Change

NSE Folder :- D:\NSESECURITIES\

Change

(NSE Indices & Futures folders shall be with in NSE Folder.)

	DD	MM	YYYY
BSE Last Date :-	01	01	1998
NSE Last Date :-	07	09	2012
F&O Last Date :-	07	09	2012
Fx Fut Last Date :-	07	09	2012
MF Last Date :-	09	08	2012
Split Adjusted :-	01	01	2010

☐ Create Backup Data Files

Selected World Indices

- Hangseng
- Nikkei
- FTSE100
- Dow Jones

☐ Update World Indices from Google

Save Cancel

This is the Directory where SQA saves EOD Data

Select the Dates from which you want SQA to download EOD Data



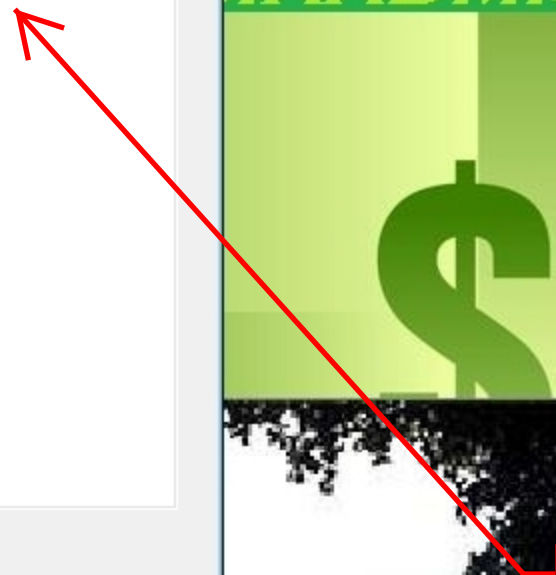
Action Options Other Info

Ready

NSE to Metastock Ver. 4.1.3

Updating NSE Data for 08/09/2012
Download complete
Downloading NSE Data for 08/09/2012

Updating.. ATLANTA



EOD Data being updated



Once the EOD Update is finished click on 'EOD Stocks Analysis'.

WWW.AAMAADMISoftware.COM

359,464	0.3%
8,632,724	7.7%
59,087	0.1%
13,963,095	12.4%
5,266,055	4.7%
10,323,178	9.2%
5,283,470	4.7%
4,330,582	3.8%
490,555	0.4%
12,036,658	10.7%
121,056	0.1%
4,162,809	3.7%
33,607,969	29.9%
1,987,731	1.8%
1,665,228	
5,014,932	
5,255,312	

StockQuotes with Analysis - Disclaimer

The Future/Stock Tips/Direction/Levels are purely a view point calculated on some mathematical formula and there is no guarantee on the returns. Hence all the traders/investors are requested to apply their prudence and consult their financial advisor before acting on any of the recommendations by this software or any of its mode. Neither writer of the software nor anyone related to this software hold any responsibility of any losses incurred (if any) by acting on the recommendations.

All data and reports used/recommended by this software are only information services and are not individualized recommendations to buy or sell securities, nor offers to buy or sell securities.

Under any circumstances it's recommendations cannot be sold to anyone. This software is property of AamAadmiSoftware and can not be distributed freely.

By clicking on OK, you agree to above terms.

OK

13,963,095	12.4%
5,266,055	4.7%
10,323,178	9.2%
5,283,470	4.7%
4,330,582	3.8%

Accept the Disclaimer

NSE Analysis Ver. 4.1.3

Select Series for Future
 Near ☒ Next ☐ Far ☐

From Date Last Trading Date DD MM YYYY
 07 09 2012

Period ☒ 05 Trading Sessions

Select Option

Period Based Analysis

☒ Change in Future Prices
☐ Change in Future Prices (Less Sensitive)
☐ FII/DII Figures
☐ Calculate Beta for stocks
☐ CNX500 Stocks Vs Nifty Movements
☐ Sectors Vs Nifty Movements
☐ FII/DII With Stock Action

Last Day Based Analysis

☐ Options Analysis
☐ Volume Shockers
☐ Premium & Discount on Last Trading Date
☐ Momentum Stock Futures
☐ Future Sup. & Res. (Next day) for day trading
☐ Stock Sup. & Res. (Next day) for day trading

Trading Calls/Signals

☐ Buy/Sell Signal for Futures for next day
☐ Buy/Sell Signal for Stocks for next day
MA Based Swing Trading
☐ NSE Stocks
☐ Selected NSE Stocks
☐ Near Series Future
BB Based Swing Trading
☐ NSE Stocks
☐ Near Series Future

Trade with Trend Trading

☐ NSE Stocks
☐ Selected Futures
☐ Near Series Future
☐ Near Currency Future

Candle Patterns

☐ NSE Stocks
☐ Near Series Future

Sector/Group Analysis

Intraday Futures Calls

Read Disclaimer

Show Results ☐ Preserve Copy of Generated Reports Exit

Once Disclaimer is accepted this Main Analysis Screen opens with all the Options we need for making decision for your next trade.

Let us see all the REPORTS this Screen generates for us.

In the next screen click on the links of the respective options to download the sample Reports and have a close look at those.

We believe once you figure out what SQA can offer you would never need any advisory services again.

Select Series for Future

Near ☒ Next ☐ Far ☐☐ From Date☒ Period

05

Trading Sessions

Last Trading Date

DD

MM

YYYY

07

09

2012

Select Option

Period Based Analysis

- ☒ Change in Future Prices
- ☐ Change in Future Prices (Less Sensitive)
- ☐ FII/DII Figures
- ☐ Calculate Beta for stocks
- ☐ CNX500 Stocks Vs Nifty Movements
- ☐ Sectors Vs Nifty Movements
- ☐ FII/DII With Stock Action

Last Day Based Analysis

- ☐ Options Analysis
- ☐ Volume Shockers
- ☐ Premium & Discount on Last Trading Date
- ☐ Momentum Stock Futures
- ☐ Future Sup. & Res. (Next day) for day trading
- ☐ Stock Sup. & Res. (Next day) for day trading

Trading Calls/Signals

- ☐ Buy/Sell Signal for Futures for next day
- ☐ Buy/Sell Signal for Stocks for next day

MA Based Swing Trading

- ☐ NSE Stocks
- ☐ Selected NSE Stocks
- ☐ Near Series Future

BB Based Swing Trading

- ☐ NSE Stocks
- ☐ Near Series Future

Trade with Trend Trading

- ☐ NSE Stocks
- ☐ Selected Futures
- ☐ Near Series Future
- ☐ Near Currency Future

Candle Patterns

- ☐ NSE Stocks
- ☐ Near Series Future

Click on the coloured icons above the boxes to read to notes.

Sector/Group Analysis

Intraday Futures Calls

Click on the options (surrounded by dotted lines) to see Sample Reports these options generates for you.

Read Disclaimer

Show Results

☐ Preserve Copy of Generated Reports

Exit

NSE Analysis Ver. 4.1.3

Select Series for Future
Near ☒ Next ☐ Far ☐

☐ From Date
☒ Period Trading Sessions

Last Trading Date DD MM YYYY

Select Option

Period Based Analysis

- ☒ Change in Future Prices
- ☐ Change in Future Prices (Less Sensitive)
- ☐ FII/DII Figures
- ☐ Calculate Beta for stocks
- ☐ CNX500 Stocks Vs Nifty Movements
- ☐ Sectors Vs Nifty Movements
- ☐ FII/DII With Stock Action

Last Day Based Analysis

- ☐ Options Analysis
- ☐ Volume Shockers
- ☐ Premium & Discount on Last Trading Date
- ☐ Momentum Stock Futures
- ☐ Future Sup. & Res. (Next day) for day trading
- ☐ Stock Sup. & Res. (Next day) for day trading

Trading Calls/Signals

- ☐ Buy/Sell Signal for Futures for next day
- ☐ Buy/Sell Signal for Stocks for next day

MA Based Swing Trading

- ☐ NSE Stocks
- ☐ Selected NSE Stocks
- ☐ Near Series Future

BB Based Swing Trading

- ☐ NSE Stocks
- ☐ Near Series Future

Trade with Trend Trading

- ☐ NSE Stocks
- ☐ Selected Futures
- ☐ Near Series Future
- ☐ Near Currency Future

Candle Patterns

- ☐ NSE Stocks
- ☐ Near Series Future

Sector/Group Analysis

Intraday Futures Calls

Read Disclaimer

Show Results ☐ Preserve Copy of Generated Reports Exit

BackTesting

Back Testing Period

Last Trading Date :
(dd/mm/yyyy)

No. of Days :

System to be back tested

- ☒ Trade with Trend
- ☐ Under Construction

Select Future : Go

Select Stock : Go

Select FXFut : Go

Exit

Select Last Trading day

Select Scrip & press 'Go'

Select No of Days
[Maximum is 730
days (2 yrs)]

SQA has inbuilt BackTesting Facility for Trade with Trend analysis

Click on 'Back Testing' on the menu bar. BackTesting dialogue opens (see right)