
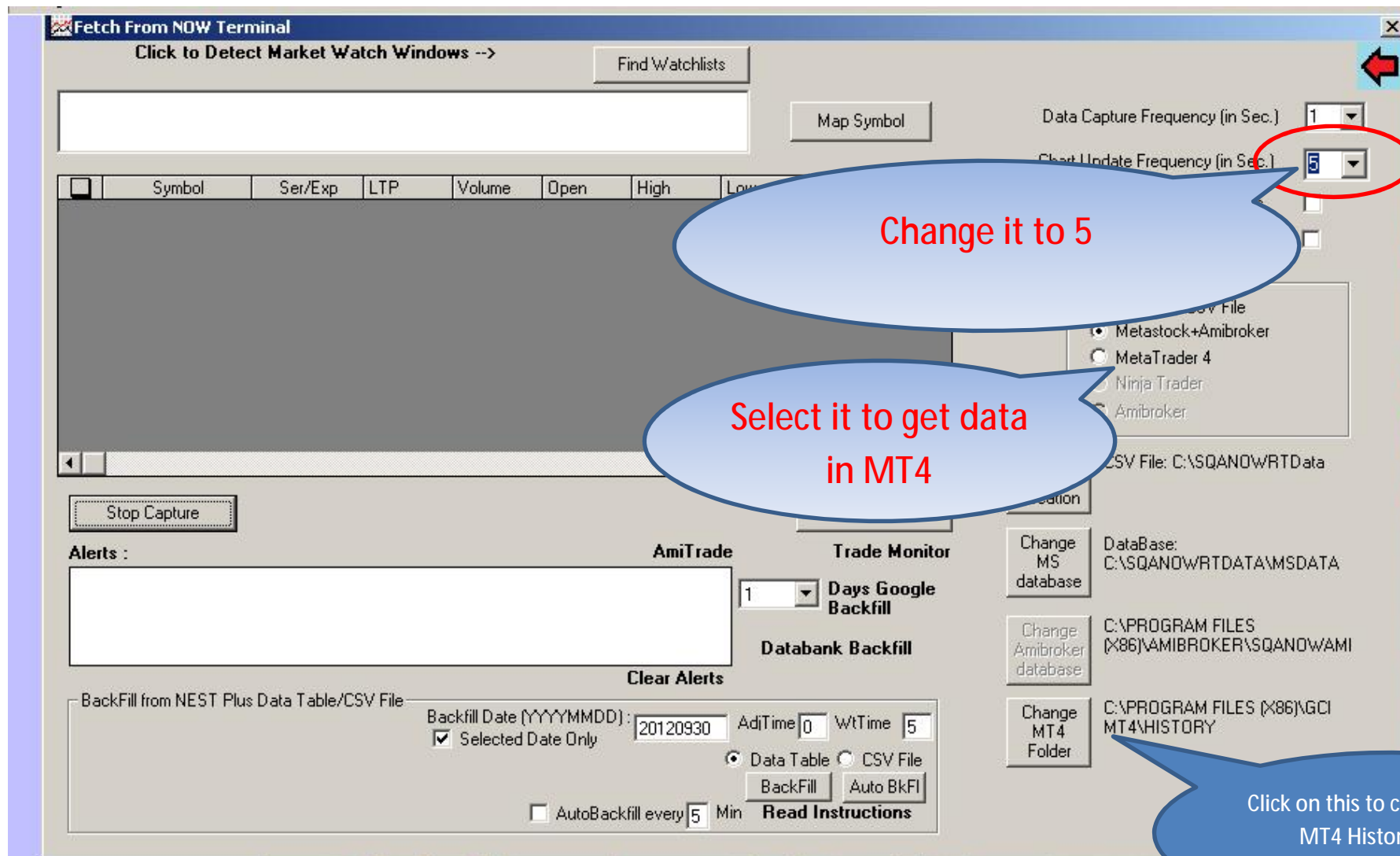
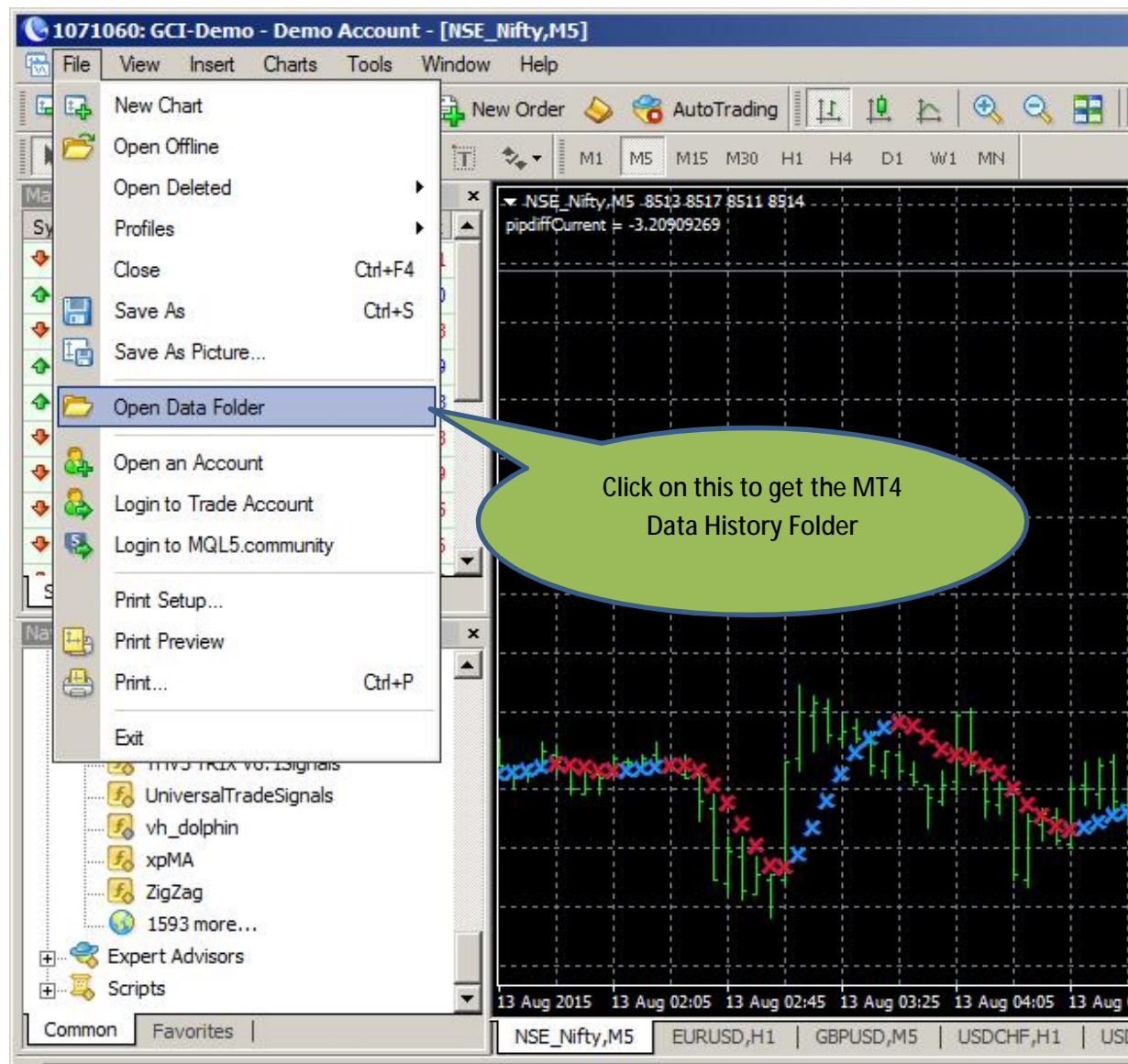


HOW TO CONFIGURE SQA WITH MT4



- Expand the Window by clicking on  on top right corner to see the settings.
- Select the MT4 History folder as per installation of MT4 in your system. It should be History folder of MT4 platform which you want to run to see the charts i.e. GCI MT4, Forex MT4, MetaTrader 4 etc.





1071060: GCI-Demo - Demo Account - [NSE_Nifty,M5]

File View Insert Charts Tools Window Help

GCI MT4

Computer Local Disk (C:) Program Files (x86) GCI MT4

Search GCI MT4

Organize Open Include in library Share with Burn New folder

Favorites

- Desktop
- Downloads
- Recent Places
- Google Drive
- My SugarSync

Desktop

- Libraries
- Administrator
- Computer
- Local Disk (C:)
- Data (D:)
- DVD Drive (E:)
- CD Drive (F:) 20110729_05
- Removable Disk (G:)
- DVD RW Drive (I:)
- Network
- Control Panel
- Recycle Bin
- IRIEEN
- Other
- Others 09042015

Name **Date modified** **Type** **Size**

config	06/06/2015 21:56	File folder	
experts	11/04/2015 00:03	File folder	
history	07/07/2015 00:15	File folder	
links	26/01/2012 10:27	File folder	
logs	11/08/2015 22:10	File folder	
MQL4	11/04/2015 00:03	File folder	
profiles	21/07/2015 20:34	File folder	
Sounds	26/01/2012 10:27	File folder	
templates	26/01/2012 10:27	File folder	
tester	28/06/2015 22:55	File folder	
DDE-Sample.xls	11/04/2015 00:03	Microsoft Excel 97-...	16 KB
metaeditor.exe	05/07/2015 10:58	Application	8,495 KB
terminal.exe	05/07/2015 11:06	Application	11,301 KB
terminal.ico	11/04/2015 00:03	Icon	45 KB
Uninstall.exe	11/04/2015 00:01	Application	8,743 KB

Date created: 26/01/2012 10:27
Size: 128 bytes
Files: mql4, mql5

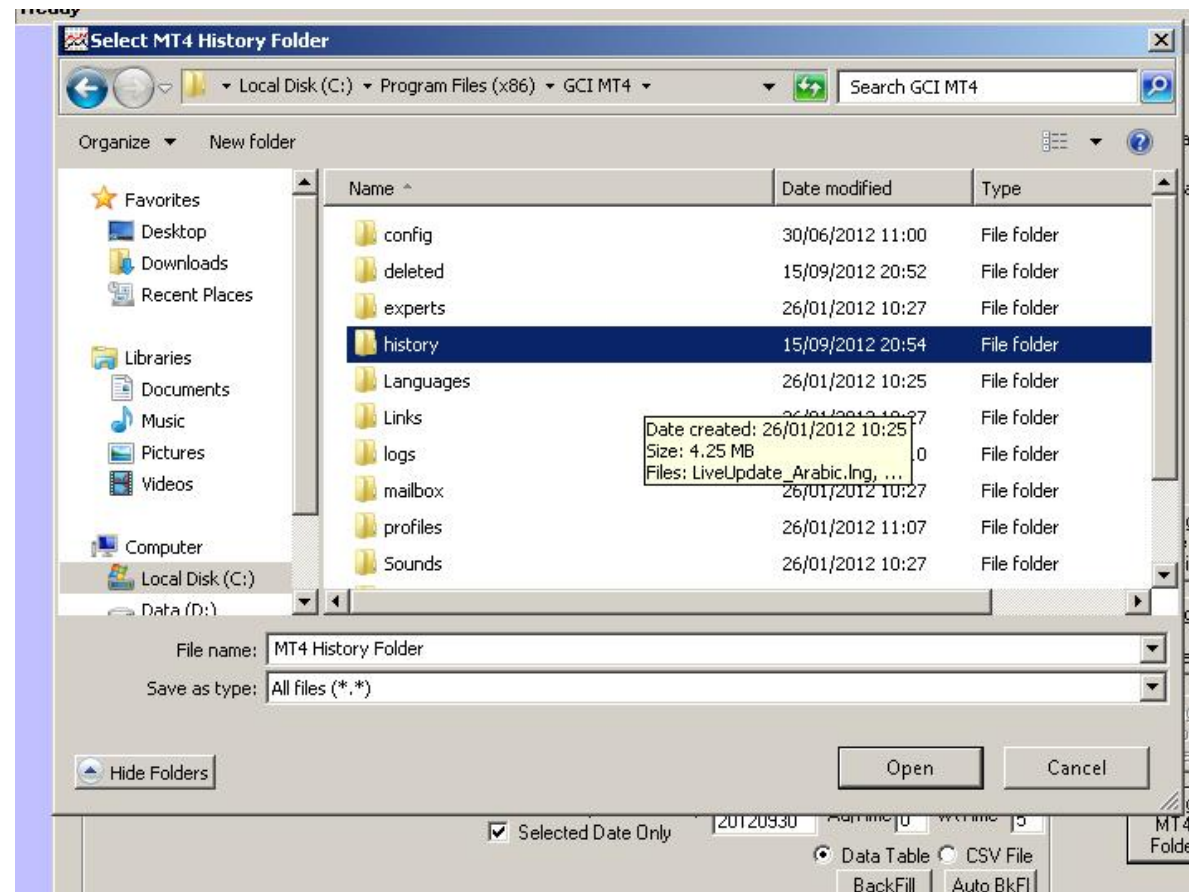
history Date modified: 07/07/2015 00:15
File folder

Headline

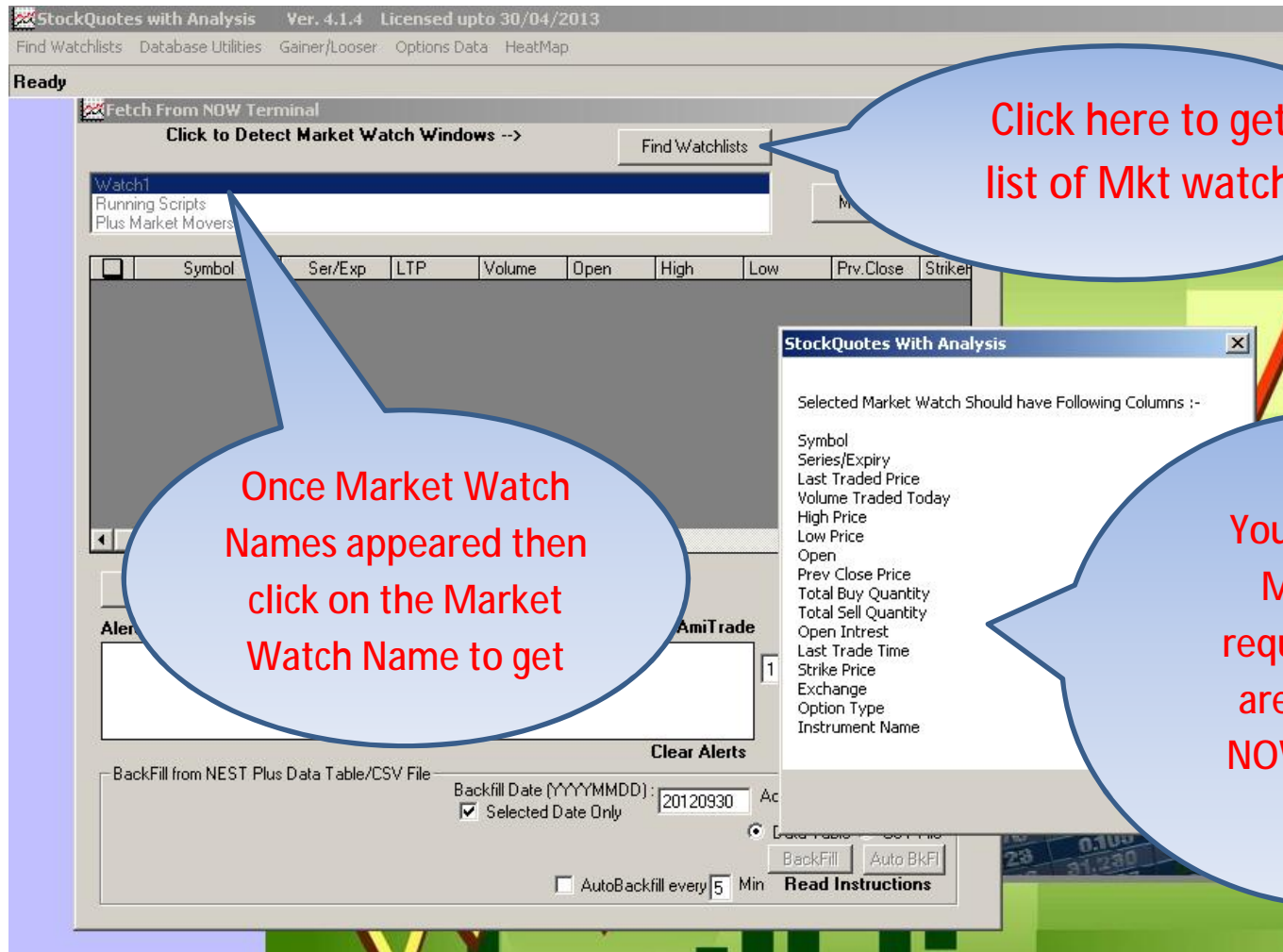
30% Deposit F

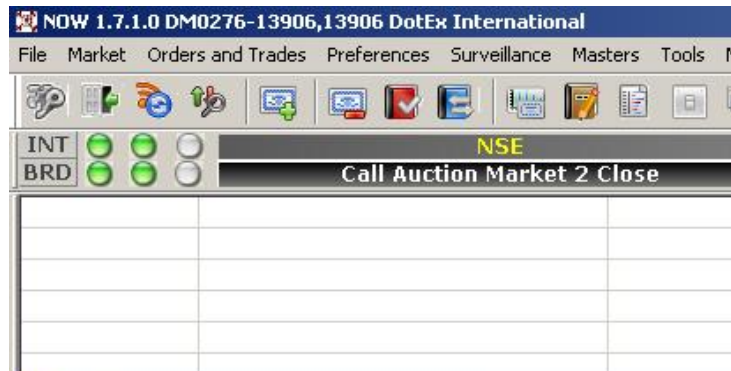
GCI introduces

Select the MT4 History folder as shown above in SQA. Path shown above may be different depending on your MT4 installation and OS. It should be History folder itself.
DO NOT SELECT ANY FOLDER FROM INSIDE HISTROY FOLDER i.e. SQA or ANY OTHER FOLDER.

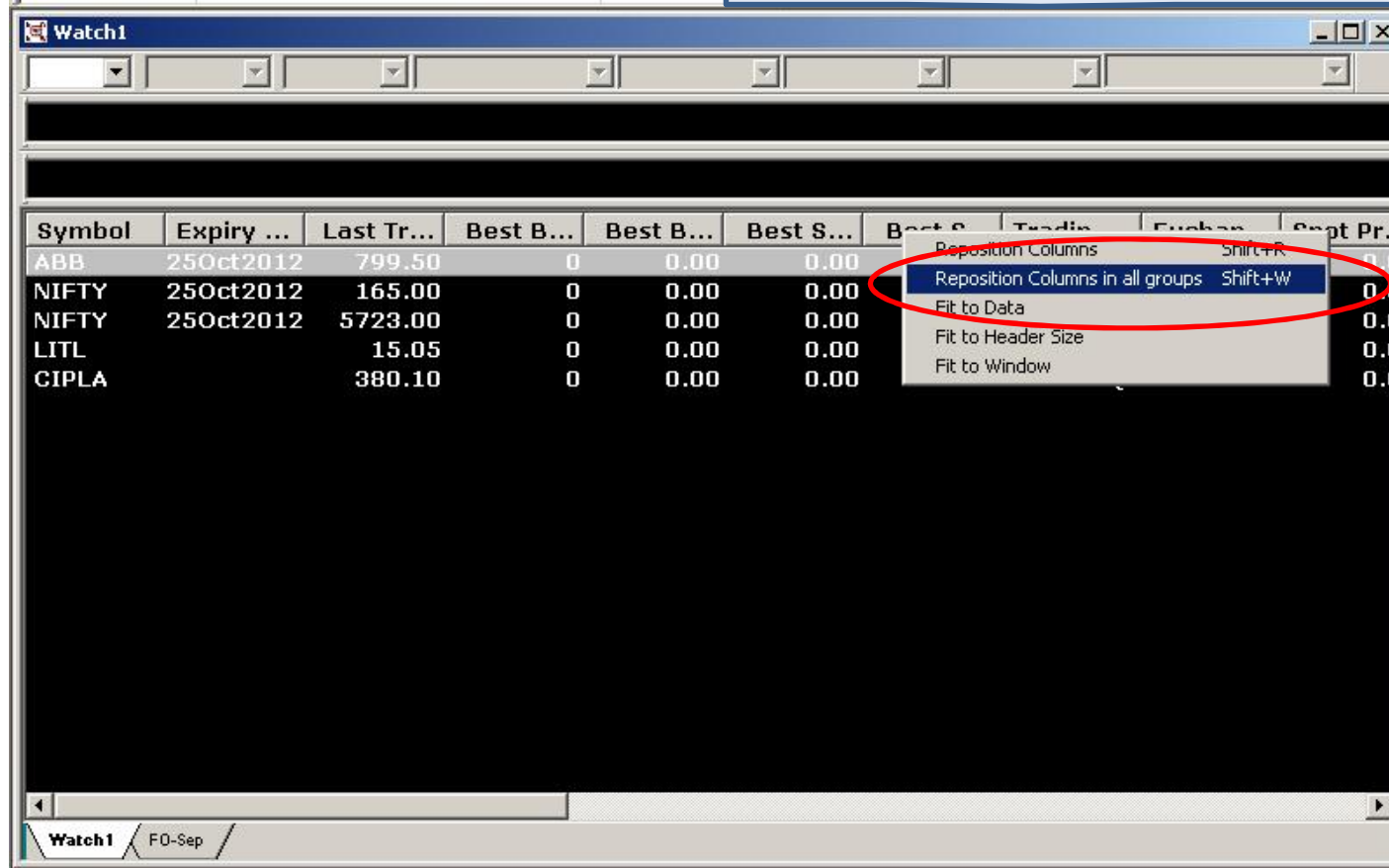


- 1) Start capturing Live Quotes from NOW Terminal. For that Run NOW and Make Market watch of Scrip for which you want to see the charts. After Mkt Watch of NOW is ready then click on Find Market Watch in SQA. You will see NOW market watch names in SQA. Click on the name of Market watch which you want to capture.





To Add the Required Columns in NOW Market Watch, right click on columns title bar and select Reposition Columns in All Groups



NOW 1.7.1.0 DM0276-13906,13906 DotEx International

File Market Orders and Trades Preferences Surveillance Masters Tools Nest Plus * Window Help

INT NSE
BRD Call Auction Market 2 Close

Sequence of Columns is not important. Additional columns can also be added. But make sure that all the columns mentioned in the Message of SQA are included.

Watch1

Column Profile of MarketWatch - DM0276-13906

Indicator	Delta	Sedol code	Default	Symbol	Total Buy Quantity
Outstanding Borrowings	LTP Yield	Reuter code		Expiry Date	Prev Close Price
Description	Best Sell Yield	Cusip code		Last Traded Price	Low Price
Source	Best Buy Yield	Unique Key	>	Best Buy Qty	High Price
Transaction Type	VWAP Close	LTR IV fut		Best Buy Rate	Open
Initiation Price	Decimal precision	Ask IV fut		Best Sell Rate	Strike Price
StopLoss Price	Separator	Bid IV fut		Best Sell Qty	Total Open Interest
Target Price	Price Quotation	LTR IV ch		Trading Symbol	Open Interest
Price At Call	Tender Period	Ask IV ch	<	Exchange	Volume Traded Today
Value	Net Change	Bid IV ch		Spot Price	Last Trade Qty
CA	ATP	Lower Ckt Price		Series/Expiry	Last Trade Time
Rho	MarketType	Upper Ckt Price		Option Type	
Vega	Auction Number	Percentage Change		Instrument Name	
Theta	Bloomberg code	Min Lot Qty		Net Change Indicator	
Gamma	Isin code	Board Lot Qty		Total Sell Quantity	

Save Cancel

Watch1 F0-Sep

NestPlus Error : get intradaybestfive request failed , unknown request

Start GoogleChromeD... SubhaNandini NSE2MetaComb... shalabh_tyagi - ... AmiBroker - [RE... StockQuotes_A... StockQuotes wi... Document1 - Mi... NOW 1.7.1.0 D... 14:34

Ready

Fetch From NOW Terminal

LastUpdate:20120930 153000

Find Watchlists

Map Symbol

Watch1

Running Scripts

Plus Market Movers

<input type="checkbox"/>	Symbol	Ser/Exp	LTP	Volume	Open	High	Low	Prv.Close	StrikeP
<input type="checkbox"/>	ABB-I	25Oct2012	799.5	0	0.00	0.00	0.00	0.00	
<input type="checkbox"/>	NIFTY-I5600C	25Oct2012	165	0	0.00	0.00	0.00	0.00	560
<input type="checkbox"/>	NIFTY-I	25Oct2012	5723	0	0.00	0.00	0.00	0.00	
<input type="checkbox"/>	LITL	EQ	15.05	0	0.00			15.05	
<input type="checkbox"/>	CIPLA	EQ	380.1	0	0.00	0.00	0.00	380.10	

Once all the columns are added in NOW Market watch, you will get Live Rates in SQA after clicking on OK on the Message.

Alert

Monitor

1 Days Google Backfill

Databank Backfill

Clear Alerts

BackFill from NEST Plus Data Table/CSV File

Backfill Date (YYYYMMDD): 20120930 AdjTime 0 WtTime 5

☒ Selected Date Only

☒ Data Table ☐ CSV File

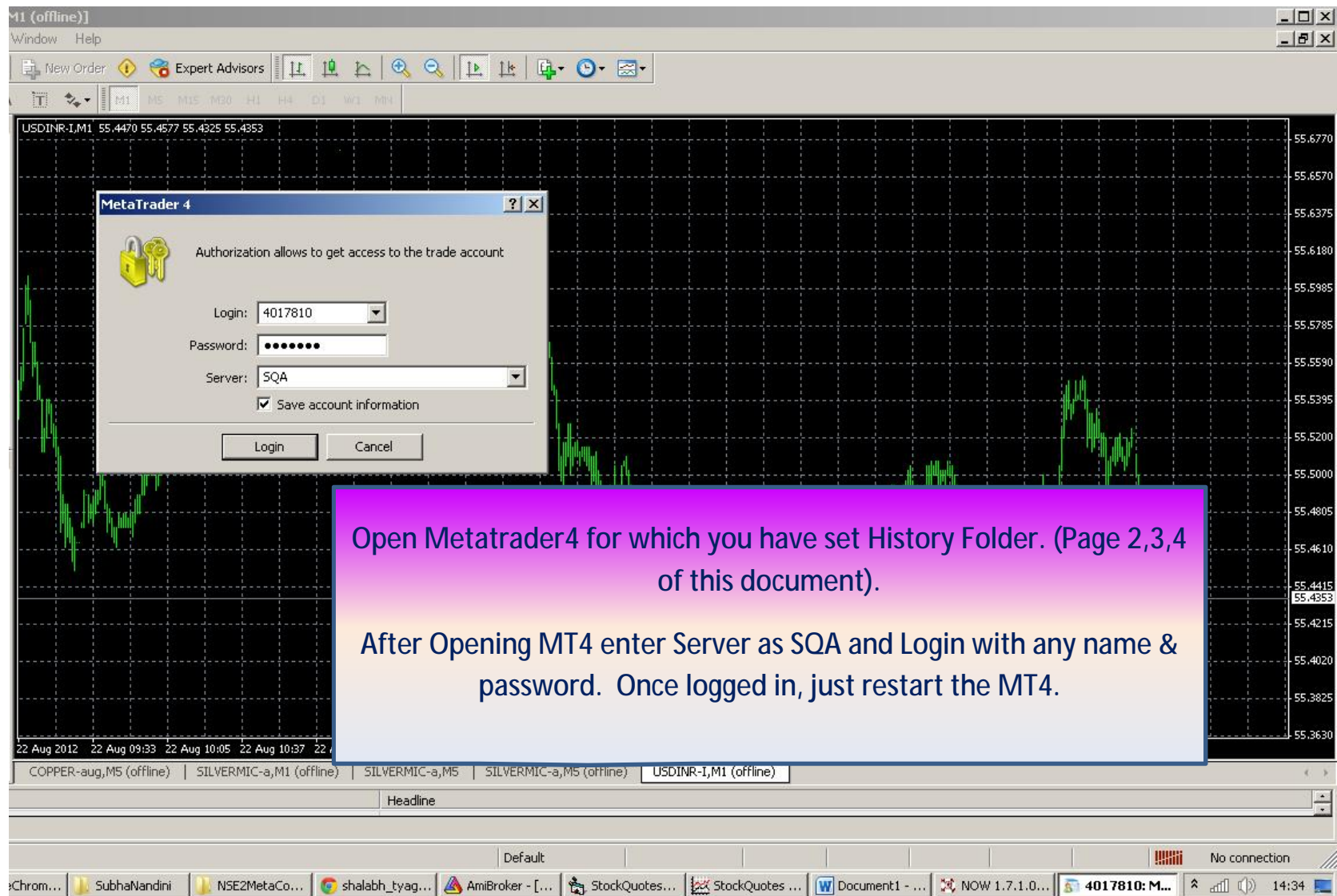
BackFill

Auto BkFI

☐ AutoBackfill every 5 Min

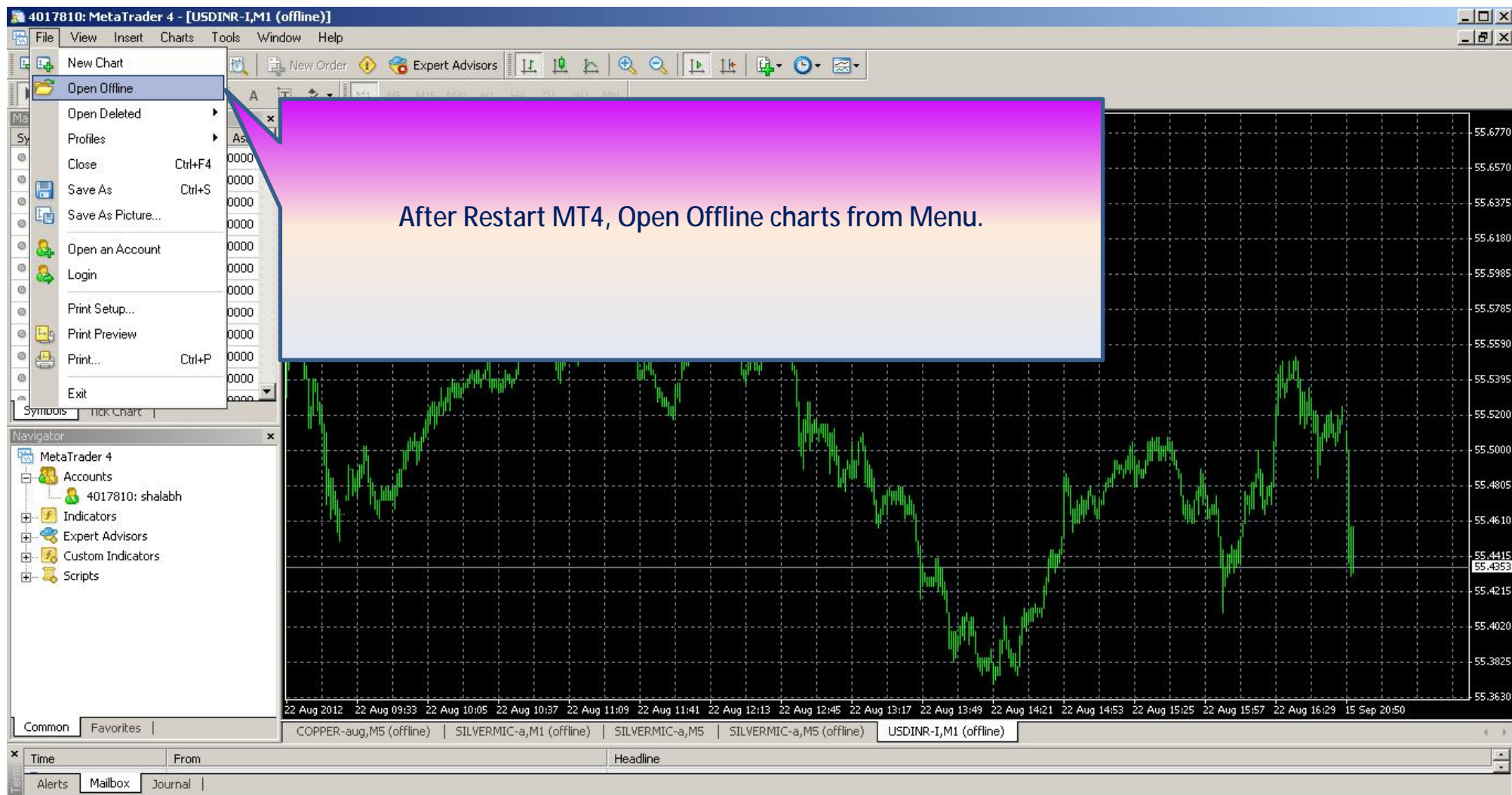
Read Instructions





Open Metatrader4 for which you have set History Folder. (Page 2,3,4 of this document).

After Opening MT4 enter Server as SQA and Login with any name & password. Once logged in, just restart the MT4.



4017810: MetaTrader 4 - [USDINR-I,M1 (offline)]

File View Insert Charts Tools Window Help

Market Watch

Symbol	Bid	Ask
CRUDEOIL-au	0.0000	0.0000
COPPER-aug	0.0000	0.0000
ALUMINI-aug	0.0000	0.0000
SILVERMIC-a	0.0000	0.0000
USDINR-I	0.0000	0.0000
NIFTY-I4900	0.0000	0.0000
HINDALCO	0.0000	0.0000
LITL	0.0000	0.0000
RELIANCE	0.0000	0.0000
SOUTHBANK	0.0000	0.0000
HCLTECH	0.0000	0.0000

Symbols

Tick Chart

Navigator

MetaTrader 4

- Accounts
 - 4017810: shalabh
- Indicators
- Expert Advisors
- Custom Indicators
- Scripts

Open Offline Chart

History Data

ABAN-I,M1			
ABAN-I,M5			
ABAN-I,M15			
ABAN-I,M30			
ABAN-I,H1	2	2012.08.22 09:00	2012.08.22 09:15
ABB-I,M1	6	2012.08.22 09:30	2012.08.22 09:16
ABB-I,M5	5	2012.08.22 09:30	2012.08.22 09:16
ABB-I,M15	4	2012.08.22 09:30	2012.08.22 09:16
ABB-I,M30	4	2012.08.22 09:30	2012.08.22 09:16
ABB-I,H1	2	2012.08.22 09:00	2012.08.22 09:16
ABIRLANUVO-,M1	14	2012.08.22 09:32	2012.08.22 09:16
ABIRLANUVO-,M5	7	2012.08.22 09:30	2012.08.22 09:16
ABIRLANUVO-,M15	4	2012.08.22 09:30	2012.08.22 09:16
ABIRLANUVO-,M30	4	2012.08.22 09:30	2012.08.22 09:16
ABIRLANUVO-,H1	2	2012.08.22 09:00	2012.08.22 09:16
ACC-I,M1	23	2012.08.22 09:32	2012.08.22 09:15
ACC-I,M5	7	2012.08.22 09:30	2012.08.22 09:15
ACC-I,M15	4	2012.08.22 09:30	2012.08.22 09:15
ACC-I,M30	4	2012.08.22 09:30	2012.08.22 09:15
ACC-I,H1	2	2012.08.22 09:00	2012.08.22 09:15

Cancel

USDINR-I,M1 55.4470 55.4577 55.4325 55.4353

22 Aug 2012

22 Aug 09:33

22 Aug 10:05

22 Aug 10:37

22 Aug 11:09

22 Aug 11:41

22 Aug 12:13

22 Aug 12:45

22 Aug 13:17

22 Aug 13:49

22 Aug 14:21

22 Aug 14:53

22 Aug 15:25

22 Aug 15:57

22 Aug 16:29

15 Sep 20:50

55.6770

55.6570

55.6375

55.6180

55.5985

55.5785

55.5590

55.5395

55.5200

55.5000

55.4805

55.4610

55.4415

55.4353

55.4215

55.4020

55.3825

55.3630

Common Favorites

COPPER-aug,M5 (offline)

SILVERMIC-a,M1 (offline)

SILVERMIC-a,M5

SILVERMIC-a,M5 (offline)

USDINR-I,M1 (offline)

Time

From

Headline

Alerts

Mailbox

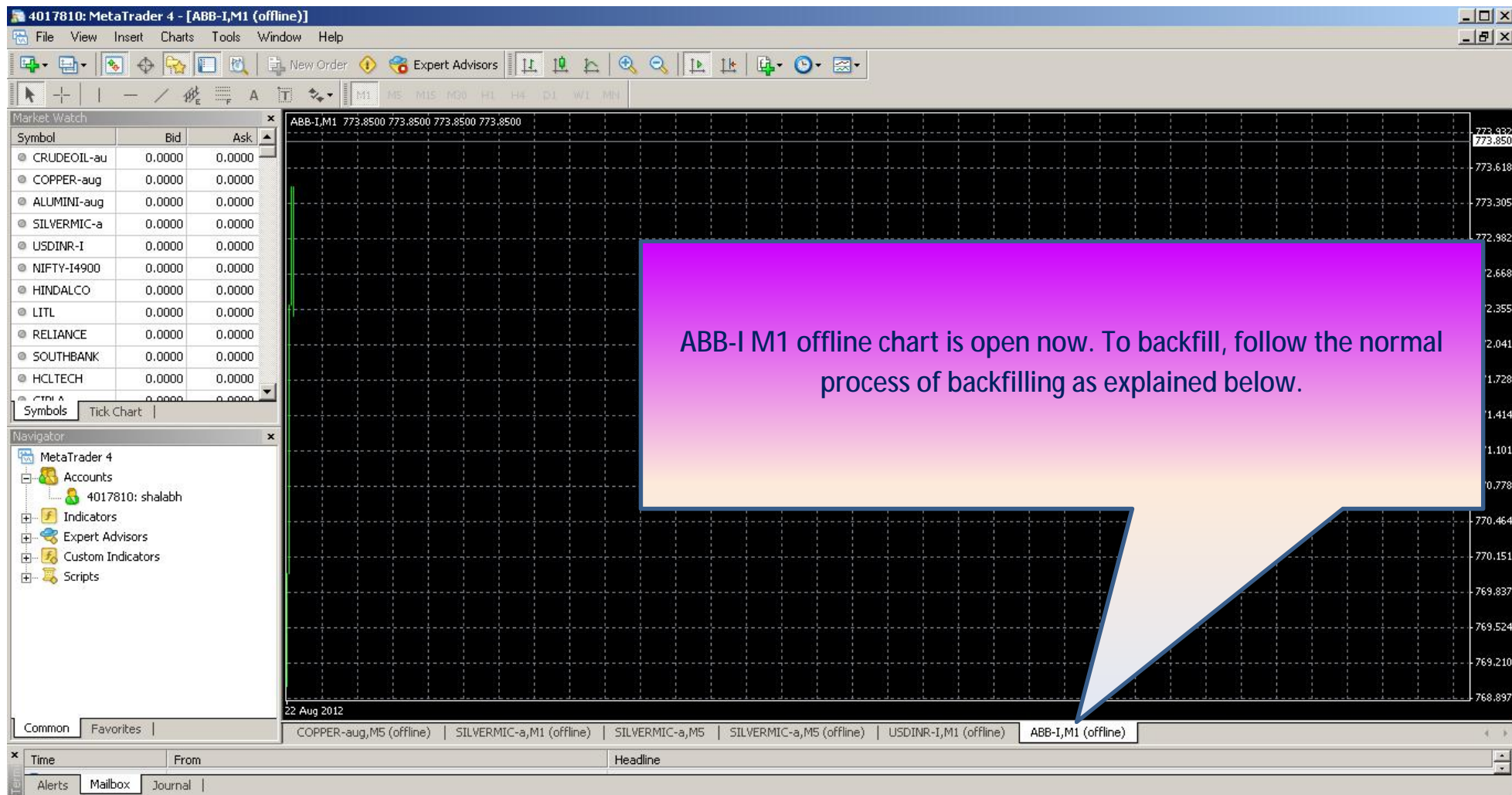
Journal

For Help, press F1

Default

No connection

You will see all the symbol of NOW Market watch in the list. You can open any charts by double clicking on it.



StockQuotes with Analysis Ver. 4.1.4 Licensed upto 30/04/2013

Find Watchlists Database Utilities Gainer/Loser Options Data HeatMap

Ready

Fetch From NOW Terminal
LastUpdate: 20120930 153000

Find Watchlists

Map Symbol

Watch1
Running Scripts
Plus Market Movers

<input type="checkbox"/>	Symbol	Ser/Exp	LTP	Volume	Open	High	Low	Prev. Close	Strike
<input checked="" type="checkbox"/>	ABB-I	250ct2012	799.5	0	0.00	0.00	0.00	0.00	
<input type="checkbox"/>	NIFTY-15600C	250ct2012	165	0	0.00	0.00	0.00	0.00	560
<input type="checkbox"/>	NIFTY-I	250ct2012		0	0.00	0.00	0.00	0.00	
<input type="checkbox"/>	LITL	EQ	15.05					15.05	
<input type="checkbox"/>	CIPLA	EQ	380.1	0				380.10	

Stop Capture

Exit

Alerts :

AmiTrade

Trade Monitor

1 Days Google Backfill

Databank Backfill

Clear Alerts

BackFill from NEST Plus Data Table/CSV File

Backfill Date (YYYYMMDD) : 20120930 AdjTime 0 WtTime 5

☐ Selected Date Only

☒ Data Table ☐ CSV File

BackFill Auto BkFI

☐ AutoBackfill every 5 Min

Read Instructions

SOFTWARE.COM

1.121 0.1201 + 0.18% 11.600 N/A

20.232 1.0233 + 1.53% 10.201 13.203

0.186 1.1611 + 1.15% N/A

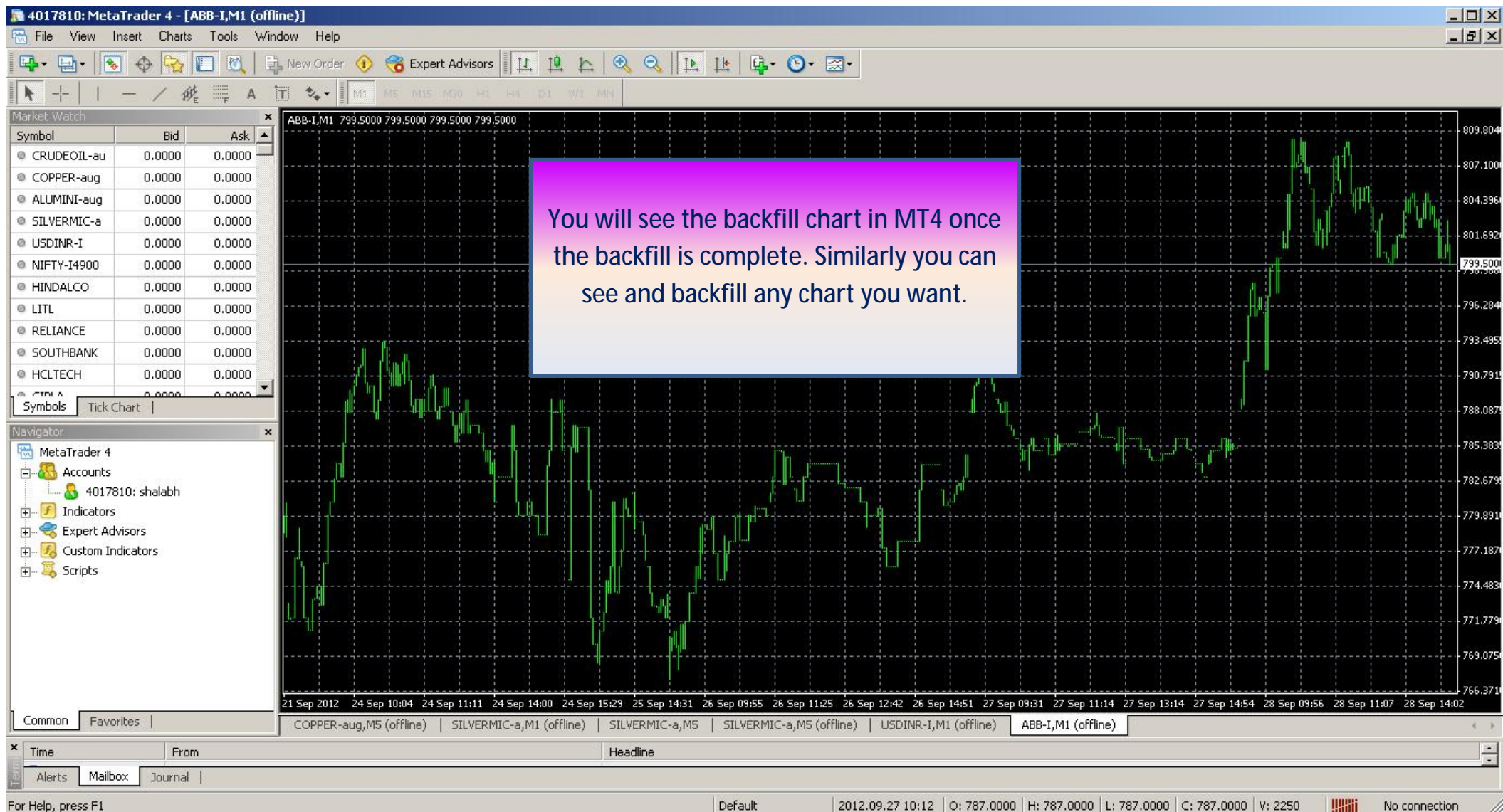
10,323,178 9.2%

5,283,470 4.7%

4,330,582 3.8%

Tick the symbol which you want to backfill

Click on Auto-backfill to start backfill. If you want to backfill all the available data then untick "Selected Date Only". It will open another Panel. Click on Auto-backfill on that panel also.



Enjoy the Trading with Technology.....