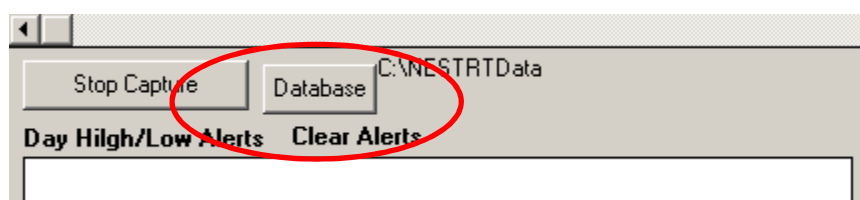
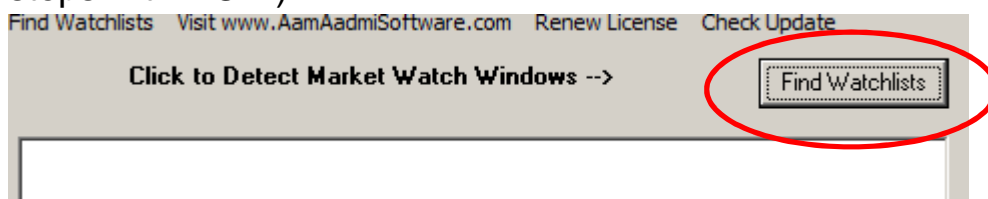


Instructions for Nest2Ami Pro

1. Read FAQ page of our website (<http://www.aamaadmisoftware.com/frequently-asked-questions-faq>) before starting of any installation.
2. Download Nest2AmiPro setup from our Download page of our website. Extract the setup file from the downloaded rar file in any folder and then run extracted file as administrator. Window XP user may ignore this.
3. After installation, Run Nest2Ami pro as administrator.
4. If nest2ami pro gives some message that some DLL or OCX file is not correctly installed then run click2reg.bat file, available in Nest2Ami Pro folder.
5. If Nest2Ami Pro is run for the first time, please ensure that the database folder defined in Nest2Ami Pro exists. You can change the database folder to any folder of your choice by clicking the "Database" button as shown below:



6. Once database folder is set, Click on "Find Watchlist" button to capture all the open watch list of Nest Trader. Nest Trader must be running (If you are capturing from NOW then follow the saem steps with NOW).

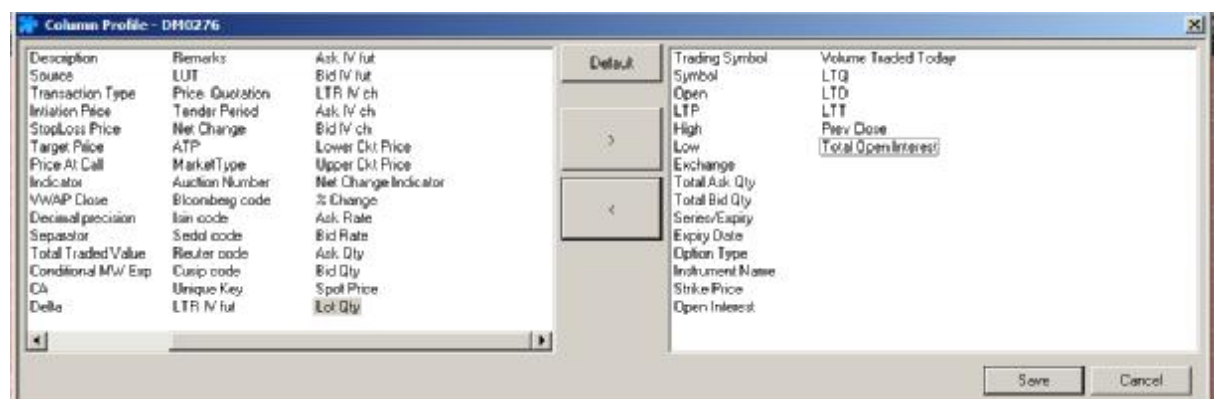


7. If Nest2Ami Pro gives a message that “Selected Database Path Does not Exists”, then select the database folder (any existing blank Folder) by clicking “Database “ button as explained in step 5 above.
8. Once you click on “Find Watchlist” button, You can see all the market watch in the list box of Nest2Ami pro.



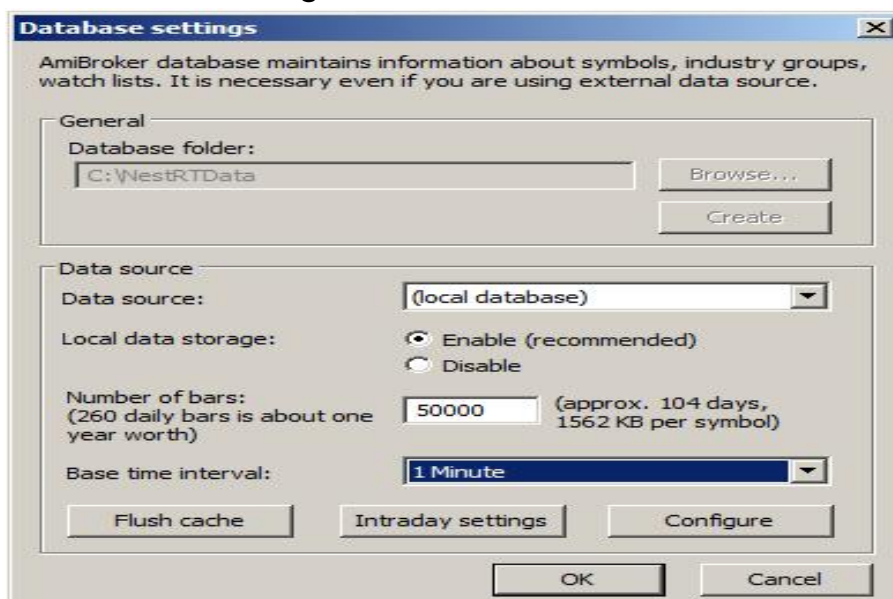
9. Click on any of the Watchlist Name in the list to Start Capturing of Live Data. If after clicking, Nest2Ami pro, gives you message regarding adding columns in nest market watch, then add all the required columns in Nest trader Market watch. Required columns can be added in Nest Trader Market watch by right clicking on Nest Trader Market Watch Column header and selecting “Reposition Columns in All groups” as shown below:

Trading Symbol	Symbol	Open	High	Low	Exc...	Total Ask...	Total Bid...	Spot ...
ALUMINI14MARFUT	ALUMINI	0.00	0.00	0.00	0.00 MCX	0	0	0.00
ALUMINIUM14MARFUT	ALUMINIUM	0.00	0.00	0.00	0.00 MCX	0	0	0.00
COPPER14APRFUT	COPPER	0.00	0.00	0.00	0.00 MCX	0	0	0.00
COPPERM14APRFUT	COPPERM	0.00	0.00	0.00	0.00 MCX	0	0	0.00
COTTON14MARFUT	COTTON	0.00	0.00	0.00	0.00 MCX	0	0	0.00
CPO14MARFUT	CPO	0.00	0.00	0.00	0.00 MCX	0	0	0.00
CRUDEOIL14MARFUT	CRUDEOIL	0.00	0.00	0.00	0.00 MCX	0	0	0.00
GOLD14APRFUT	GOLD	0.00	30585.00	0.00	0.00 MCX	0	0	0.00
GOLDGUINEA14MARFUT	GOLDGUINEA	0.00	25067.00	0.00	0.00 MCX	0	0	0.00



Please note that sequence of the columns is not important. Also, please do not add all the columns to save time. This will generate an error.

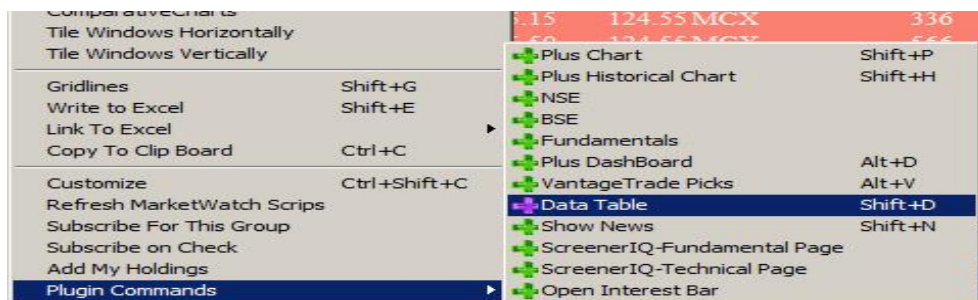
10. Once the columns are set then click on OK button on Nest2Ami pro message or repeat step 6 – 8 to start capture live rates.
11. If market is closed and no scrip is coming in spite of Nest2Ami pro flashing “Capturing Live Data”, goto Nest trader Market Watch, Right click on any scrip and select Refresh Market Watch Scrips. Scrips should come in Nest2Ami Pro.
12. Amibroker will be opened by Nest2Ami Pro automatically with correct database folder. Alternatively you can keep Amibroker opened manually before starting nest2ami pro.
13. If market is running, then you can see the charts in amibroker from the instant you started nest2ami pro. Please note that Amibroker takes 3 bar to display any chart, so depending of the time frame you have opened. To see whether live data is coming to amibroker, open 1 min chart of any scrip and wait for 3 minutes. You should see the chart.
14. Although, you need to change the settings of database in amibroker, settings are shown below:



15. Now you have setup Nest2Ami pro for live data capturing.
16. To backfill, you need to register yourself for Nest Plus on Omneysys website. Nest Plus is part of nest plus but it needs separate registration. You are required to register for free package of nest plus. You may require to update your version of Nest Plus in case you have older version. Just tick nest plus while logging into Nest Trader and then follow the message given by Nest Plus.

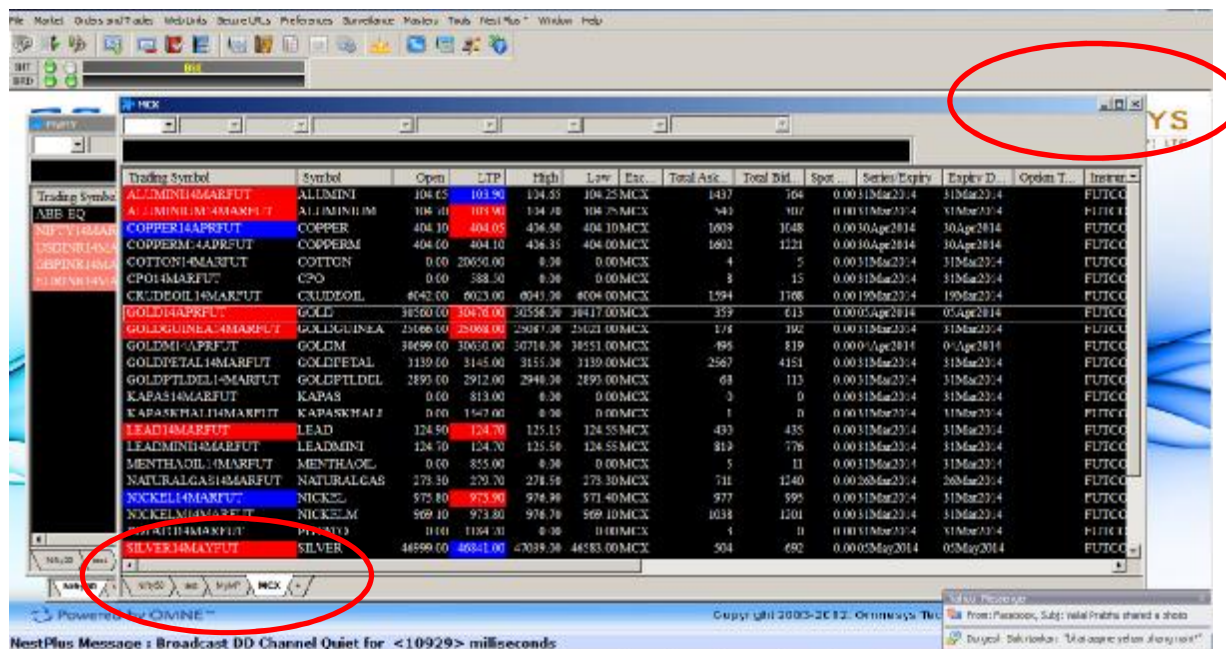


17. To check whether your Nest Plus is properly registered and working, You can right click on any scrip on nest trader and select Plugin Commands -> Data table. You should see data tables as shown below:



Trading Symbol	Time	Open	High	Low	Close...	Volume
ALUMINI14MAR...	11-03-2014 13:5...	107.2000	107.3000	107.2000	107.3000	20
ALUMINI14MAR...	11-03-2014 13:5...	107.3000	107.3000	107.3000	107.3000	9
ALUMINI14MAR...	11-03-2014 13:5...	107.3000	107.3000	107.2500	107.3000	6
ALUMINI14MAR...	11-03-2014 13:5...	107.3000	107.3000	107.2500	107.3000	6
ALUMINI14MAR...	11-03-2014 13:5...	107.3000	107.3500	107.3000	107.3500	2
ALUMINI14MAR...	11-03-2014 13:5...	107.3000	107.3000	107.3000	107.3000	2
ALUMINI14MAR...	11-03-2014 13:5...	107.3000	107.3000	107.2500	107.2500	17
ALUMINI14MAR...	11-03-2014 13:5...	107.2500	107.2500	107.2500	107.2500	12
ALUMINI14MAR...	11-03-2014 14:0...	107.2500	107.3000	107.2500	107.3000	1
ALUMINI14MAR...	11-03-2014 14:0...	107.3000	107.3000	107.2500	107.2500	10
ALUMINI14MAR...	11-03-2014 14:0...	107.2500	107.2500	107.2500	107.2500	2
ALUMINI14MAR...	11-03-2014 14:0...	107.2500	107.2500	107.2500	107.2500	5
ALUMINI14MAR...	11-03-2014 14:0...	107.2500	107.2500	107.2500	107.2500	1
ALUMINI14MAR...	11-03-2014 14:0...	107.2500	107.3000	107.2500	107.3000	7
ALUMINI14MAR...	11-03-2014 14:0...	107.3000	107.3000	107.2000	107.2500	23
ALUMINI14MAR...	11-03-2014 14:0...	107.2500	107.2500	107.2500	107.2500	5
ALUMINI14MAR...	11-03-2014 14:1...	107.2500	107.2500	107.2000	107.2500	7
ALUMINI14MAR...	11-03-2014 14:1...	107.2500	107.2500	107.2000	107.2000	12
ALUMINI14MAR...	11-03-2014 14:1...	107.2000	107.2000	107.2000	107.2000	24
ALUMINI14MAR...	11-03-2014 14:1...	107.2000	107.2500	107.2000	107.2500	7
ALUMINI14MAR...	11-03-2014 14:1...	107.2500	107.2500	107.2500	107.2500	1
ALUMINI14MAR...	11-03-2014 14:1...	107.2500	107.2500	107.2000	107.2500	12
ALUMINI14MAR...	11-03-2014 14:1...	107.2500	107.2500	107.2000	107.2000	2
ALUMINI14MAR...	11-03-2014 14:1...	107.2000	107.2000	107.2000	107.2000	2
ALUMINI14MAR...	11-03-2014 14:1...	107.2000	107.2000	107.1500	107.1500	40
ALUMINI14MAR...	11-03-2014 14:2...	107.1000	107.1500	107.1000	107.1500	13

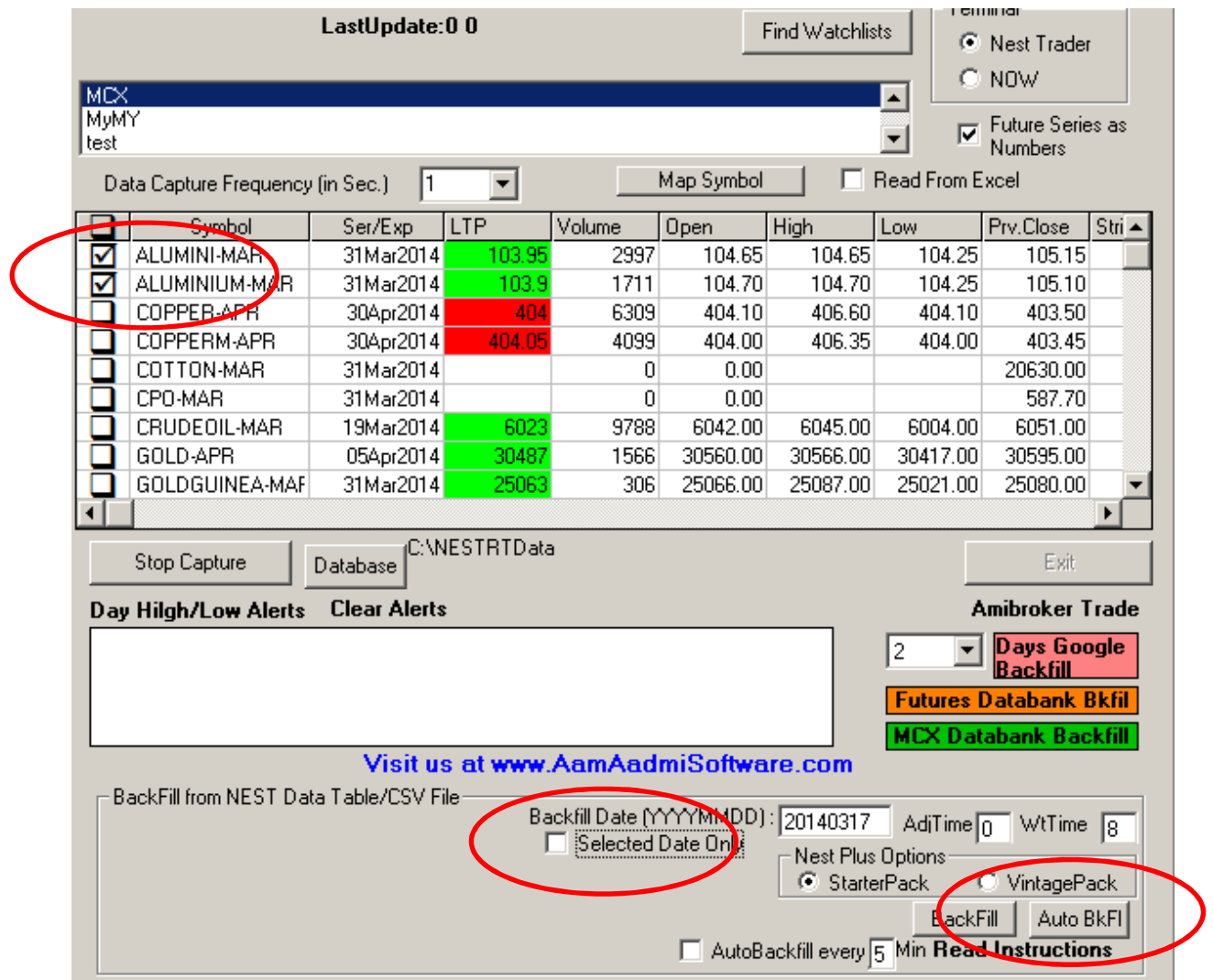
18. Once you get your Nest plus working properly, You can backfill using nest plus tables. To backfill using Nest plus, first set the nest market watch properly i.e. Not Maximized, Last scrip shown completely when scroll bar is on top and No blank lines. Same is shown below:-



Trading Symbol	Symbol	Open	LTP	High	Low	Est.	Total Ask	Total Bid	Spot	Series/Expiry	Expiry D.	Option T.	Instru...
ALUMINI14MARFUT	ALUMINI	104.05	103.90	104.55	104.25	MCX	1437	164	0.00	11Mar2014	11Mar2014		FUTCO
ALUMINIUM14MARFUT	ALUMINIUM	104.00	103.90	104.50	104.25	MCX	1437	164	0.00	11Mar2014	11Mar2014		FUTCO
COPPER14MARFUT	COPPER	404.10	404.05	404.50	404.10	MCX	1609	1648	0.00	30Apr2014	30Apr2014		FUTCO
COPPERM14MARFUT	COPPERM	404.00	404.10	404.35	404.00	MCX	1602	1221	0.00	30Apr2014	30Apr2014		FUTCO
COTTON14MARFUT	COTTON	0.00	20050.00	0.00	0.00	MCX	4	5	0.00	11Mar2014	11Mar2014		FUTCO
CPO14MARFUT	CPO	0.00	388.50	0.00	0.00	MCX	3	15	0.00	11Mar2014	11Mar2014		FUTCO
CRUDEOIL14MARFUT	CRUDEOIL	4042.00	4023.00	4041.00	4004.00	MCX	1594	1168	0.00	19Mar2014	19Mar2014		FUTCO
GOLD14MARFUT	GOLD	3150.00	3098.00	3155.00	3041.00	MCX	337	613	0.00	05Apr2014	05Apr2014		FUTCO
GOLDFUT14MARFUT	GOLDFUT	2908.00	2908.00	2908.00	2908.00	MCX	174	192	0.00	11Mar2014	11Mar2014		FUTCO
GOLDM14MARFUT	GOLDM	3069.00	3069.00	3071.00	3051.00	MCX	494	819	0.00	01Apr2014	01Apr2014		FUTCO
GOLDPTAL14MARFUT	GOLDPTAL	3119.00	3145.00	3155.00	3119.00	MCX	2567	4151	0.00	11Mar2014	11Mar2014		FUTCO
GOLDPTDEL14MARFUT	GOLDPTDEL	2893.00	2912.00	2940.00	2893.00	MCX	68	113	0.00	11Mar2014	11Mar2014		FUTCO
KAPAS14MARFUT	KAPAS	0.00	813.00	0.00	0.00	MCX	3	0	0.00	11Mar2014	11Mar2014		FUTCO
KAPASKHAF14MARFUT	KAPASKHAF	0.00	1567.00	0.00	0.00	MCX	1	0	0.00	11Mar2014	11Mar2014		FUTCO
LEAD14MARFUT	LEAD	124.50	124.70	125.15	124.55	MCX	493	435	0.00	11Mar2014	11Mar2014		FUTCO
LEADMINI14MARFUT	LEADMINI	124.70	124.70	125.50	124.55	MCX	819	776	0.00	11Mar2014	11Mar2014		FUTCO
MENTHAOL14MARFUT	MENTHAOL	0.00	855.00	0.00	0.00	MCX	5	11	0.00	11Mar2014	11Mar2014		FUTCO
NATURALGAS14MARFUT	NATURALGAS	273.30	273.70	278.50	273.30	MCX	711	1240	0.00	26Mar2014	26Mar2014		FUTCO
NICKEL14MARFUT	NICKEL	973.80	973.90	976.90	971.40	MCX	977	595	0.00	11Mar2014	11Mar2014		FUTCO
NICKELM14MARFUT	NICKELM	969.10	973.80	976.70	969.10	MCX	1038	1201	0.00	11Mar2014	11Mar2014		FUTCO
PIVOT14MARFUT	PIVOT	0.00	1104.00	0.00	0.00	MCX	1	0	0.00	11Mar2014	11Mar2014		FUTCO
SILVER14MARFUT	SILVER	46599.00	46641.00	47039.50	46583.00	MCX	504	692	0.00	05May2014	05May2014		FUTCO

19. Once nest market watch is setup properly, you are ready to do backfill. Just select the scrip in nest2ami pro (left side check box)

and then untick selected date only and click on autobackfill button as shown below :-



20. Nest2ami pro should backfill all the selected scrips one by one.

Enjoy the trading with Technology.....